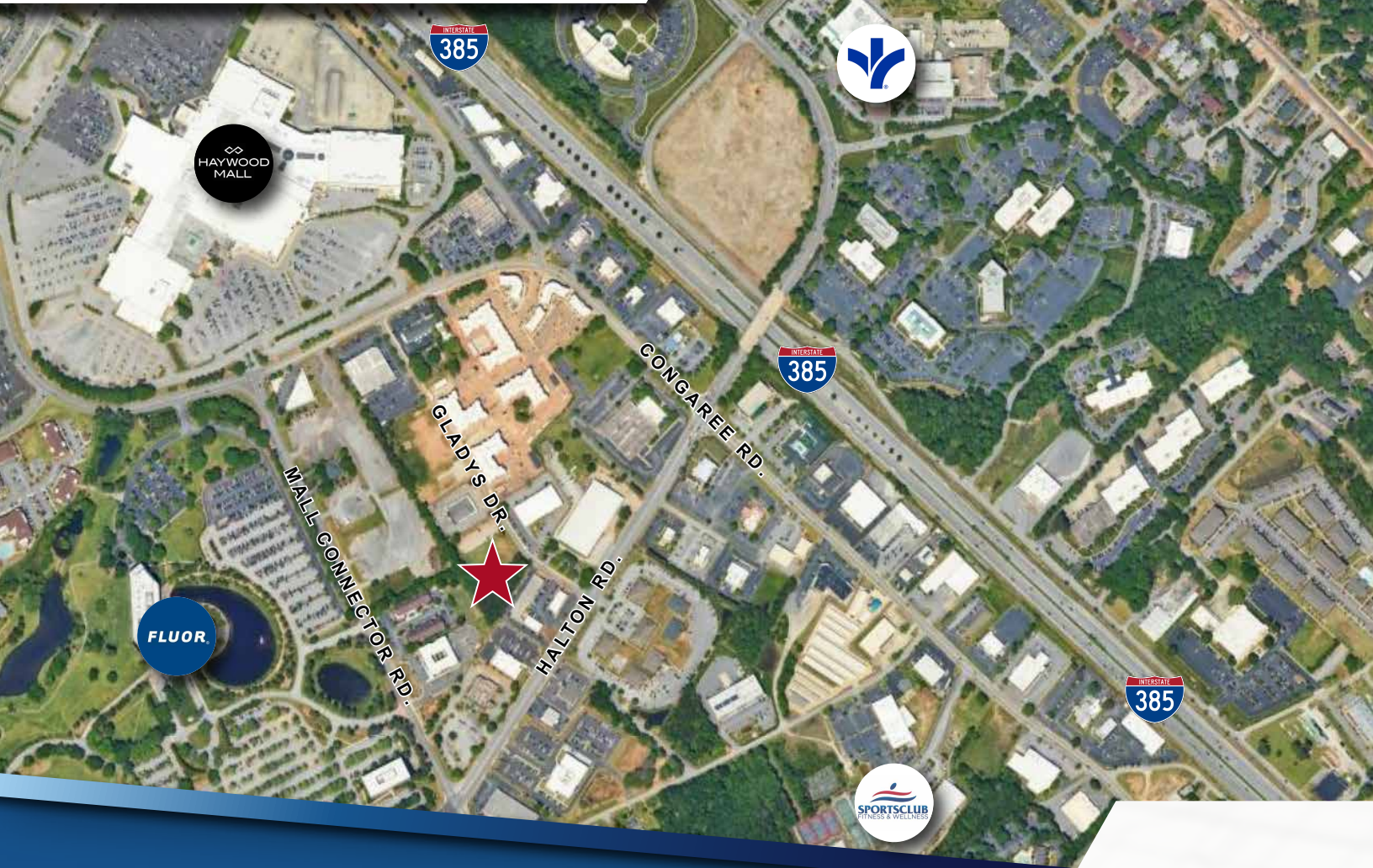


COMMERCIAL LAND

GLADYS DRIVE

GREENVILLE, SC 29607



PROPERTY DETAILS

±2 ACRES

ZONED S-1

ALL UTILITIES AVAILABLE TO SITE

CONVENIENTLY LOCATED NEAR
HAYWOOD MALL, PRISMA HEALTH/ ST.
FRANCIS EASTSIDE

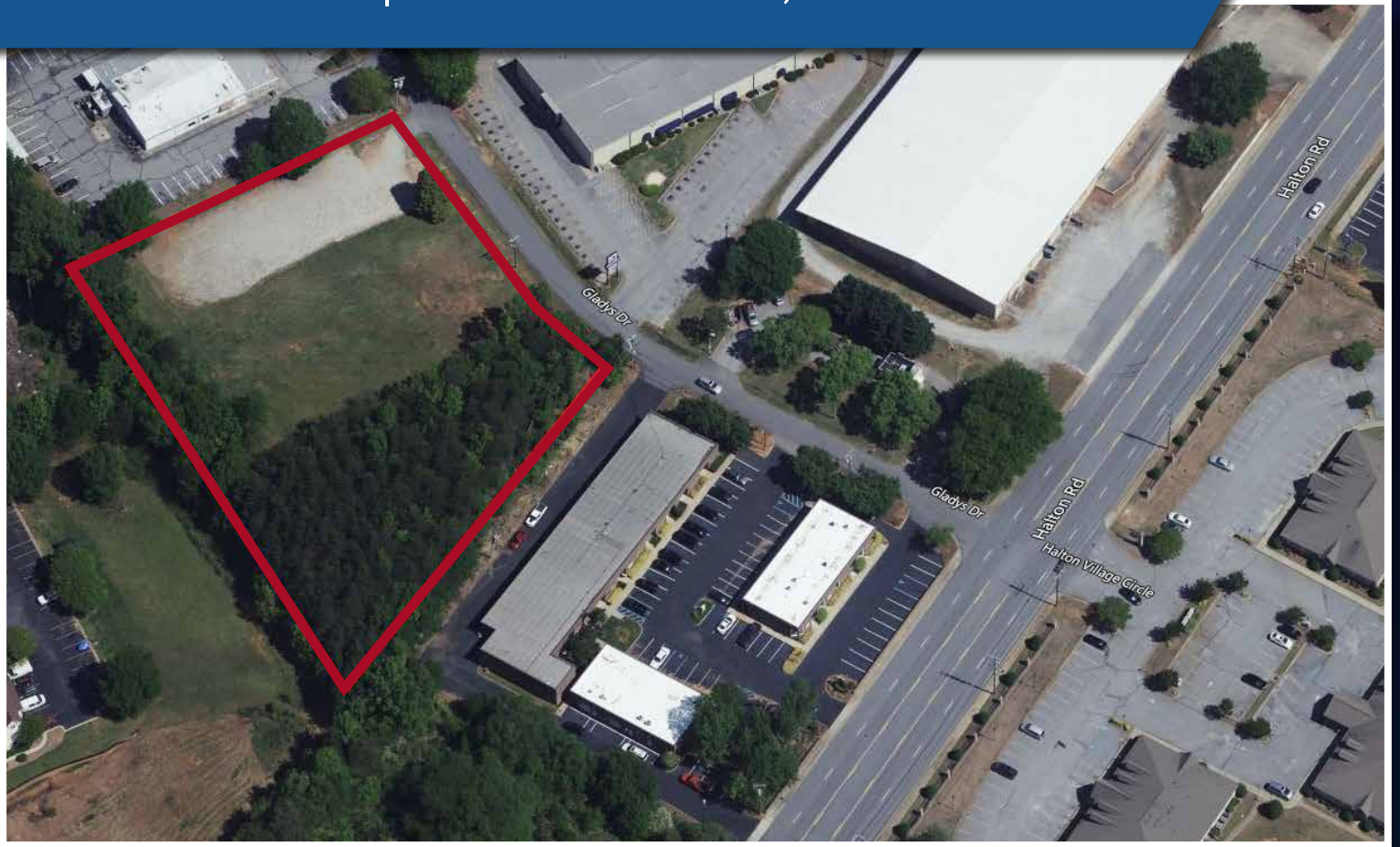
ADJACENT TO APARTMENTS, HOTELS
AND MEDICAL FACILITIES

SALE PRICE: \$900,000



BENJI SMITH, CCIM
COMMERCIAL SALES & LEASING
864-414-2281
benjismith@flagshipsc.com

GLADYS DRIVE | GREENVILLE, SC 29607



ZONED S-1 | CLOSE PROXIMITY TO I-385



2023 Demographics

	1 Mile	3 Miles	5 Miles
Population	6,552	60,256	171,716
Average HH Income	\$68,689	\$90,850	\$97,609
Households	3,475	26,028	73,535

BENJI SMITH, CCIM
COMMERCIAL SALES & LEASING
864-414-2281
benjismith@flagshipsc.com

